

MISCELLANEOUS

VERMICULITE (100L BAGS)



CODE
V4

6 & 9mm STOVE
ROPE ROLLS (25M)
12 & 25mm STOVE
ROPE ROLLS (30M)
& ROPE GLUE (50ml)

SIZE	CODE
6mm	GFR6
9mm	GFR9
12mm	GFR12
25mm	GFR25

CODE
GFP008



FIRE CEMENTS

SIZE	CODE
500gm	GFPFC500
1000gm	GFPFC1000
2000gm	GFPFC2000

CODE
GFPFBS10



CODE
GFPAPPG

10mm FIBRE TAPE (50M)
& 75mm FOIL TAPE (45M)



CODE
GFPFIBT

CODE
GFPFOILT

SMOKE PELLETS & MATCHES



CODE
GFPSP

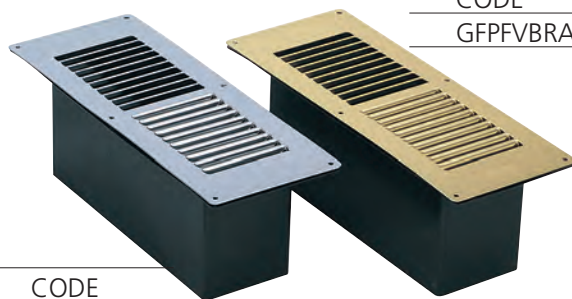
CODE
GFP019

CARBON MONOXIDE ALARM



CODE
COD

FLOOR VENTS



CODE
GFPVBRA

CODE
GFPVPOL

WALL VENT



CODE
GFPWV

FLUES AND TERMINALS



PRODUCT SPECIFICATION

HD TWIN WALL CHIMNEY PRODUCTS:

This range encompasses 150mm internal diameter insulated twin wall components designed and tested to comply with BS EN1856-1:2003. The inner & outer walls are manufactured from 316 & 304 Grade stainless steel respectively. The insulation is 25mm ceramic fibre.

The product designation is T450-N1-D-V1-L50050-G(50) which is a summary of the product classification and from this we can highlight that the product has been tested and passed the following performance requirements.

1. Thermal performance @ T450
2. 50mm distance to combustibles @ T450
3. Sootfire resistance

Although the **HD range** does not offer the wider choice of components offered by some manufacturers it does provide an economical and robust twin wall insulated chimney system concentrating on high material specification, manufacturing quality, thermal performance and ease of installation.

MULTIFUEL FLEXIBLE LINER:

These liners are approved to BS EN 1856-2. They are available in either 316 or 904 grade stainless steel twin skin construction in diameters from 80mm to 405mm. They are only to be installed inside masonry chimneys. The 316 version carries a 10 year conditional warranty whereas the 904 version is extended to 25 years. Both grades of liner must be swept annually by a suitably qualified chimney sweep and chemical chimney cleaners or metal scarifying devices should not be used as these will invalidate your warranty.

MULTIFUEL LINER FITTINGS:

Our comprehensive range of adaptors and accessories has been compiled with ease of installation in mind. From the all inclusive 'flue liner accessories pack' to individual components we aim to provide products to overcome most situations encountered during installation. The majority of the components are professionally manufactured from 316 grade stainless steel to ensure a long working life.

VITREOUS ENAMELLED FLUE PRODUCTS:

These products are approved to BS EN 1856-2 and classified as class T600. They are made from steel and then vitreous enamelled to an overall material thickness of 1.2mm. They guarantee colour stability even at very high temperatures, are scratch resistant and can be cleaned using any solvent or cleaning product. With a 'W' classification these products can be installed in the presence of condensate as long as they are fitted with the inlet facing downwards.

FLUE TERMINALS:

The majority of this range is manufactured in the UK by **'Eurocowl'** and we are very pleased to be working in conjunction with them. The products are made from a selection of materials and finished in a range of colours. The materials comprise aluminium, mild steel and stainless steel and the finishes are powder coated Sienna, Cotswold and Black with another being Natural which is unpainted stainless steel. All are supplied with fitting instructions and 'straps & band' fixings. All **'Eurocowl'** products are covered by the statutory 12 month guarantee against faulty materials or workmanship. Please note that the **'Mini Eurocowl'** is covered by a **'Money Back Guarantee'** (terms and conditions apply).

VITREOUS ENAMELLED FLUE PIPES

STANDARD LENGTHS



DIAMETER 5"

LENGTH	CODE
1000mm	FLU10005
500mm	FL5005
250mm	FLU2505
1000mm WITH DOOR	FLU10005D
500mm WITH DOOR	FLU5005D

DIAMETER 6"

LENGTH	CODE
1000mm	FLU10006
500mm	FL5006
250mm	FLU2506
1000mm WITH DOOR	FLU10006D
500mm WITH DOOR	FLU5006D

PIPE WITH DAMPER



LENGTH 250mm

DIAMETER	CODE
5"	FLUDAM5
6"	FLUDAM6

90° & 45° ELBOW



DIAMETER	90°	45°
	CODE	CODE
5"	FLU905	FLU455
6"	FLU906	FLU456

T-PIECE WITH END CAP



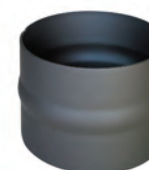
DIAMETER	CODE
5"	FLUTEE5
6"	FLUTEE6

90° & 45° ELBOW - WITH DOOR



DIAMETER	90°	45°
	CODE	CODE
5"	FLU905D	FLU455D
6"	FLU906D	FLU456D

MALE-MALE FITTING



HEIGHT 120mm	
DIAMETER	CODE
5"	FLUMM5
6"	FLUMM6

PIPE HOLDER



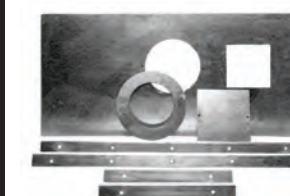
DIAMETER	CODE
5"	FLUPH5
6"	FLUPH6

0° - 90° ADJUSTABLE BEND



DIAMETER	CODE
5"	FLUAB5
6"	FLUAB6

REGISTER PLATE KIT



SIZE	CODE
30" x 14"	RP3014
32" x 15"	RP3215
42" x 15"	RP4215

MULTIFUEL FLEXIBLE LINER & ACCESSORIES

FLUE LINER ACCESSORIES PACK - CAN BE BOUGHT INDIVIDUALLY



VITREOUS PIPE TO FLEXIBLE LINER ADAPTER



FLEXIBLE LINER TOP INSERT



FLEXIBLE LINER TOP PLATE & CLAMP



ALUMINIUM NOSE CONE AND CORD



SAFETY NOTICE PLATE



FLEXIBLE LINER

(316 grade)

- 6" held in stock
- Other diameters to order
- 904 grade available
- Optional direct delivery

CODE

FFLIMTR6



CHIMWRAP™

- Supplied in 1metre lengths with fixings
- Only 12mm thick
- Withstands temperatures up to 550°C

CODE

FFLCW



MR INCREASER

- Joins a smaller diameter vitreous pipe to a larger diameter flexible liner.

SIZE	CODE
5" to 6"	FFLMR56
6" to 7"	FFLMR67
7" to 8"	FFLMR78



OFFSET INCREASER

- Uses as MR increaser in awkward or confined installations

SIZE	CODE
5"	FFLOI5
6"	FFLOI6



SUMP ADAPTER

- To connect from vitreous pipe to a clay / concrete / pumice liner

SIZE	CODE
5"x280mm	FFLSA2805
6"x280mm	FFLSA2806
5"x330mm	FFLSA3305
6"x330mm	FFLSA3306



CLAY LINER ADAPTER

SIZE	CODE
5"x175mm	FFLCLA1755
6"x175mm	FFLCLA1756
5"x200mm	FFLCLA2005
6"x200mm	FFLCLA2006
5"x225mm	FFLCLA2255
6"x225mm	FFLCLA2256



POT HANGER

- Various diameters available

SIZE	CODE
5"	FFLPH5
6"	FFLPH6
7"	FFLPH7
8"	FFLPH8



RAIN CAP

- Various diameters available

SIZE	CODE
5"	FFLRC5
6"	FFLRC6
7"	FFLRC7
8"	FFLRC8

CHIMNEY POTS & TERMINALS



ROLL TOP CHIMNEY POTS

SIZE	CODE
12"	CHIMRT12
18"	CHIMRT18
24"	CHIMRT24
36"	CHIMRT36



JACKDAW CHIMNEY DETERRENT

CODE

CHIMJD

MINI EUROCOWL STAINLESS STEEL

(4 finishes available - Stainless Steel shown)



FINISH	CODE
SIENNA	CHIMMESSI
COTSWOLD	CHIMMESSCO
BLACK	CHIMMESSBL
S. STEEL	CHIMMESS



MINI EUROCOWL ALUMINIUM

(3 finishes available - Sienna shown)

FINISH	CODE
SIENNA	CHIMMEASI
COTSWOLD	CHIMMEACO
BLACK	CHIMMEABL



EURO TOP GUARD

(4 finishes available - Cotswold shown)

FINISH	CODE
SIENNA	CHIMETGSI
COTSWOLD	CHIMETGCO
BLACK	CHIMETGBL
S. STEEL	CHIMETGSS



EURO TOP GUARD LOW PROFILE

(4 finishes available - Black shown)

FINISH	CODE
SIENNA	CHIMETGLPSI
COTSWOLD	CHIMETGLPCO
BLACK	CHIMETGLPBL
S. STEEL	CHIMETGLPSS



ECONOMY RAIN CAP (With mesh)

CODE

CHIMRTB



EURO TOP CAP ALUMINIUM (Sienna finish only)

CODE

CHIMETCA



POT HANGER ADAPTER

(5" & 6" available)

DIAMETER	CODE
5"	CHIMPHA5
6"	CHIMPHA6



POT HANGER AND EURO TOP GUARD

CODE

CHIMPHETG

150mm TWIN WALL FLUE PIPES & ACCESSORIES



STRAIGHT PIPE
(Inc. Locking Band)

DIAMETER	LENGTH		
	1000mm	500mm	200mm
	CODE	CODE	CODE
6"	FLUTWSP10006	FLUTWSP5006	FLUTWSP2006

STANDARD WALL BRACKET



CODE
FLUTWSWB

ADJUSTABLE WALL BRACKET



CODE
FLUTWAWB

BASE SUPPORT PLATE WITH BRACKETS



CODE
FLUTWBSBP

ADJUSTABLE PIPE



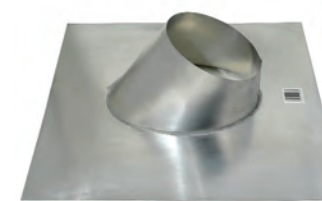
SIZE (mm)	CODE
300-600	FLUTWAP300600
530-800	FLUTWAP530800

45° BEND
(Inc. Locking Band)



CODE
FLUTWB456

ROOF FLASHING



CODE
FLUTWRF

UNIFLASH



CODE
FLUTWUF



45° TEE WITH CAP
(Inc. Locking Band)

CODE
FLUTWTC456



90° TEE WITH CAP
(Inc. Locking Band)

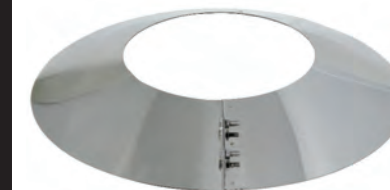
CODE
FLUTWTC906

45° WALL SLEEVE & COVER PLATE



	CODE
SLEEVE	FLUTWWS45
PLATE	FLUTWCP45

STORM COLLAR



CODE
FLUTWSC

SINGLE TO TWIN WALL ADAPTER
(Inc. Locking Band)



SIZE	CODE
5" - 6"	FLUTWSTWA56
6" - 6"	FLUTWSTWA66

LOCKING BAND



CODE
FLUTWLB

FLUE ENCLOSURE KIT
(Comprises: 2 x 1.2m mesh plus 4 x brackets)



CODE
FLUTWFEK

RAINCAP



CODE
FLUTWRC

VENTILATED FIRESTOP



CODE
FLUTWVF6

ROOF / JOIST SUPPORT BRACKET



CODE
FLUTWRJSB

TWIN WALL TO COWL ADAPTER



CODE
FLUTWTWCA

ADAPTER WITH MINI EURO COWL



CODE
FLUTWAMEC